



A HOME FIT FOR YOU

FLOORPLANS

2-BEDROOM



2-BEDROOM

TYPE B1a

63 SQM / 678 SQFT

BLK 10

#01-15 to #10-15

TYPE B1

68 SQM / 732 SQFT

BLK 10

#02-24* to #10-24*

BLK 20

#02-49 to #05-49
#02-58* to #05-58*

TYPE B1-P

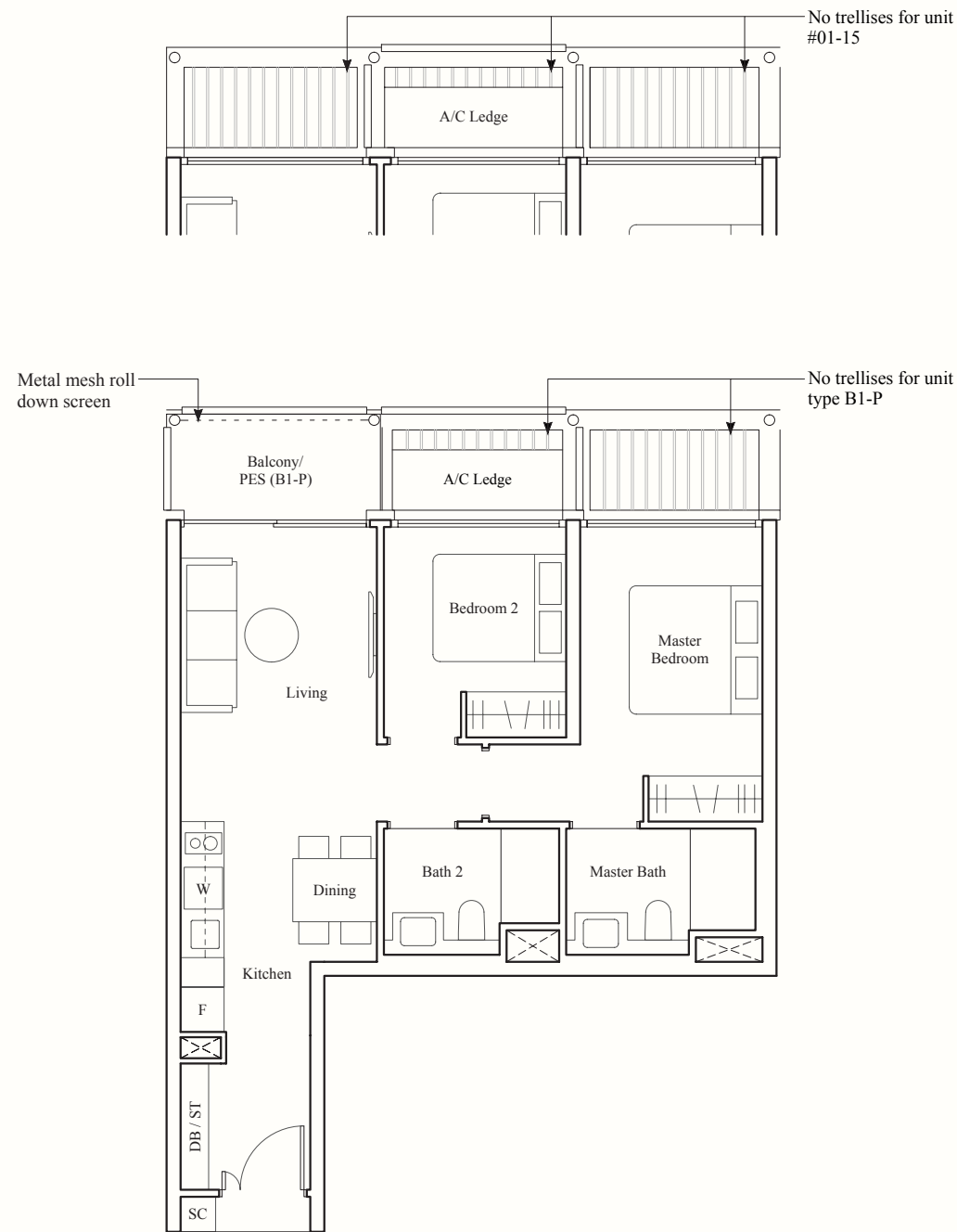
68 SQM / 732 SQFT

BLK 10

#01-24*

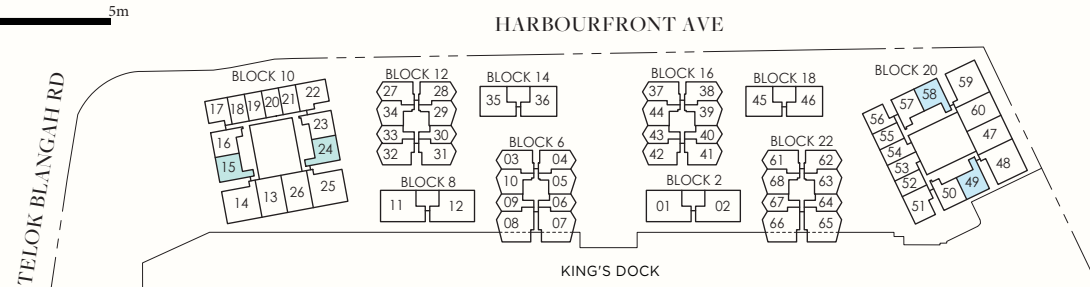
BLK 20

#01-49, #01-58*



F: Fridge
W: Washing Machine-cum-Dryer
DB: Distribution Board
SC: Shoe Cabinet
ST: Storage

* Denotes mirror image



AREA INCLUDES AIR-CON (A/C) LEDGE, BALCONY, PRIVATE ENCLOSED SPACE (PES) AND STRATA VOID AREA WHERE APPLICABLE. SOME UNITS ARE MIRROR IMAGES OF THE PLAN SHOWN IN THE BROCHURE. PLEASE REFER TO THE KEY PLAN FOR ORIENTATION. THE PLANS ARE SUBJECT TO CHANGE AS MAY BE REQUIRED BY THE RELEVANT AUTHORITIES. ALL MEASUREMENTS ARE APPROXIMATE ONLY AND ARE SUBJECT TO GOVERNMENT RE-SURVEY. THE BALCONY SHALL NOT BE ENCLOSED UNLESS WITH THE APPROVED BALCONY SCREEN.

2-BEDROOM

TYPE B2a

64 SQM / 689 SQFT

BLK 10

#01-16 to #10-16

TYPE B2b

69 SQM / 743 SQFT

BLK 20

#02-57*

TYPE B2b-P

69 SQM / 743 SQFT

BLK 20

#01-57*

TYPE B2

69 SQM / 743 SQFT

BLK 10

#02-23* to #10-23*

BLK 20

#02-50 to #05-50
#03-57* to #05-57*

TYPE B2-P

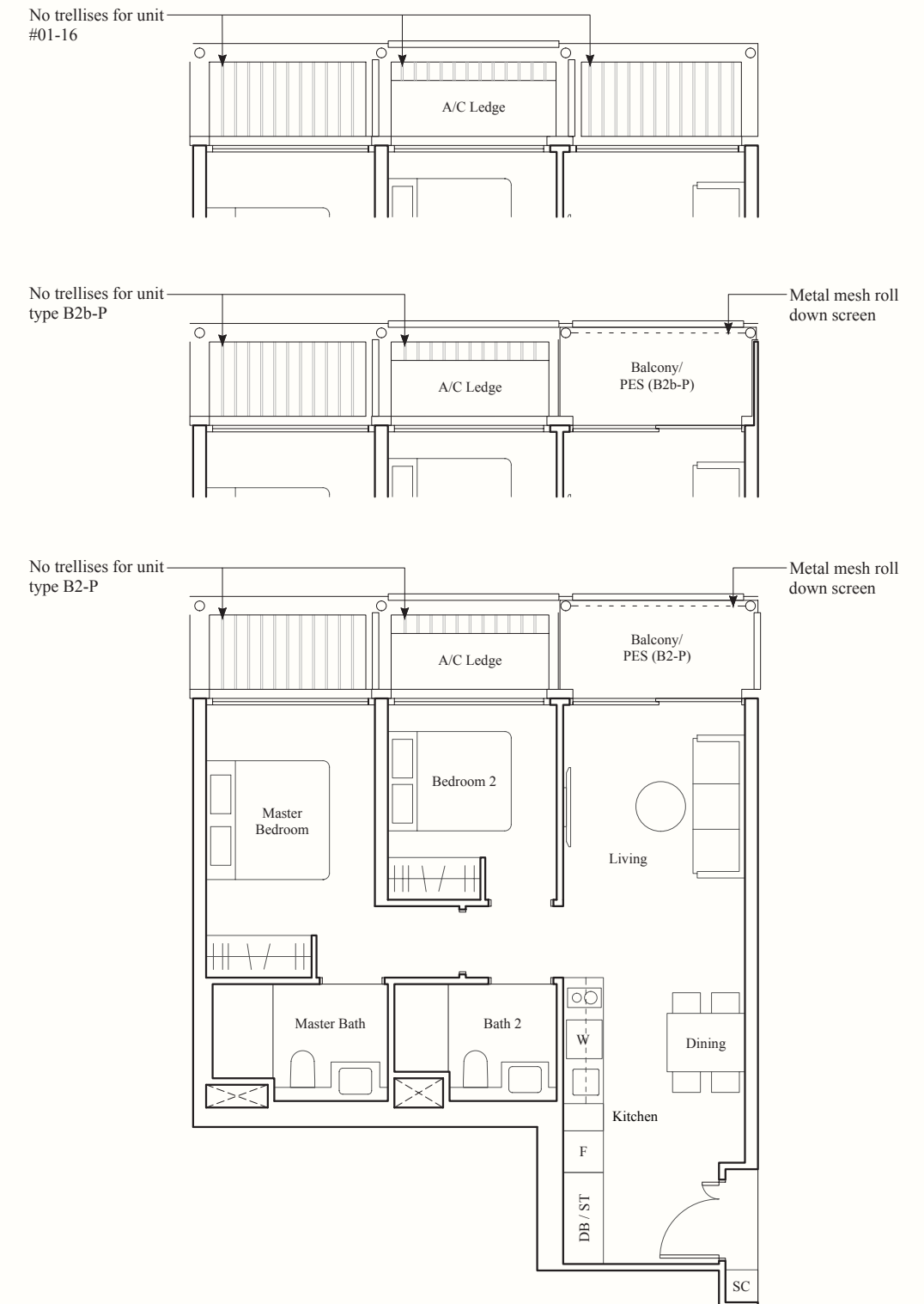
69 SQM / 743 SQFT

BLK 10

#01-23*

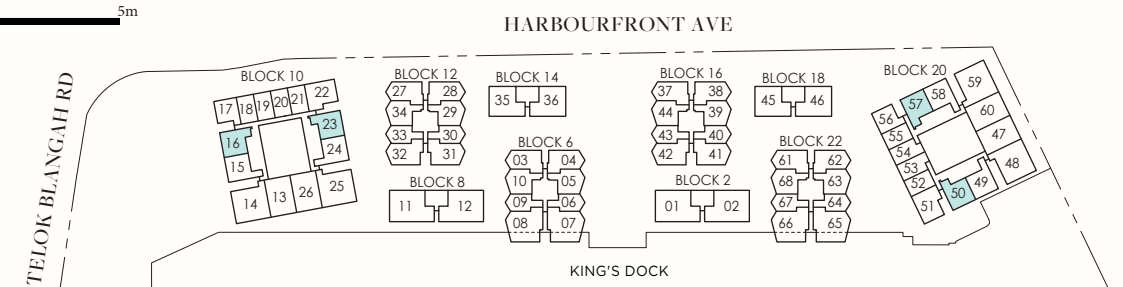
BLK 20

#01-50



F: Fridge
W: Washing Machine-cum-Dryer
DB: Distribution Board
SC: Shoe Cabinet
ST: Storage

* Denotes mirror image



AREA INCLUDES AIR-CON (A/C) LEDGE, BALCONY, PRIVATE ENCLOSED SPACE (PES) AND STRATA VOID AREA WHERE APPLICABLE. SOME UNITS ARE MIRROR IMAGES OF THE PLAN SHOWN IN THE BROCHURE. PLEASE REFER TO THE KEY PLAN FOR ORIENTATION. THE PLANS ARE SUBJECT TO CHANGE AS MAY BE REQUIRED BY THE RELEVANT AUTHORITIES. ALL MEASUREMENTS ARE APPROXIMATE ONLY AND ARE SUBJECT TO GOVERNMENT RE-SURVEY. THE BALCONY SHALL NOT BE ENCLOSED UNLESS WITH THE APPROVED BALCONY SCREEN.

2-BEDROOM

TYPE B₃

64 SQM / 689 SQFT

BLK 10

#02-22 to #10-22

BLK 20

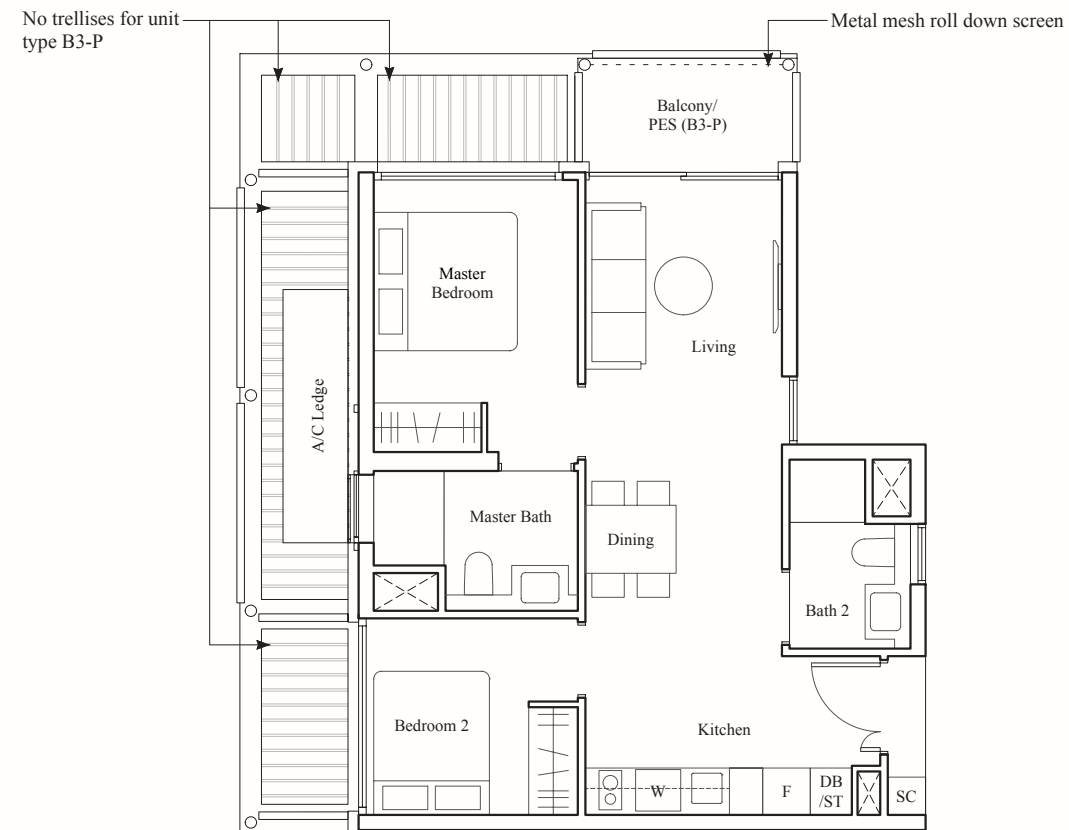
#02-51* to #05-51*

TYPE B₃-P

64 SQM / 689 SQFT

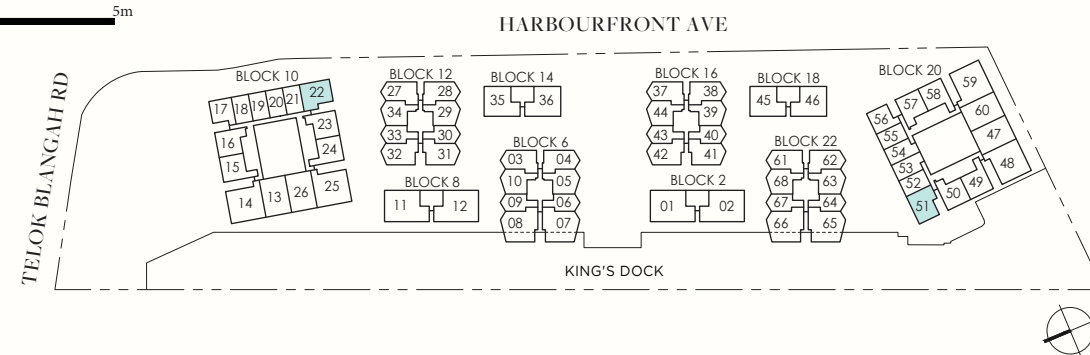
BLK 20

#01-51*



F: Fridge
W: Washing Machine-cum-Dryer
DB: Distribution Board
SC: Shoe Cabinet
ST: Storage

* Denotes mirror image



AREA INCLUDES AIR-CON (A/C) LEDGE, BALCONY, PRIVATE ENCLOSED SPACE (PES) AND STRATA VOID AREA WHERE APPLICABLE. SOME UNITS ARE MIRROR IMAGES OF THE PLAN SHOWN IN THE BROCHURE. PLEASE REFER TO THE KEY PLAN FOR ORIENTATION. THE PLANS ARE SUBJECT TO CHANGE AS MAY BE REQUIRED BY THE RELEVANT AUTHORITIES. ALL MEASUREMENTS ARE APPROXIMATE ONLY AND ARE SUBJECT TO GOVERNMENT RE-SURVEY. THE BALCONY SHALL NOT BE ENCLOSED UNLESS WITH THE APPROVED BALCONY SCREEN.

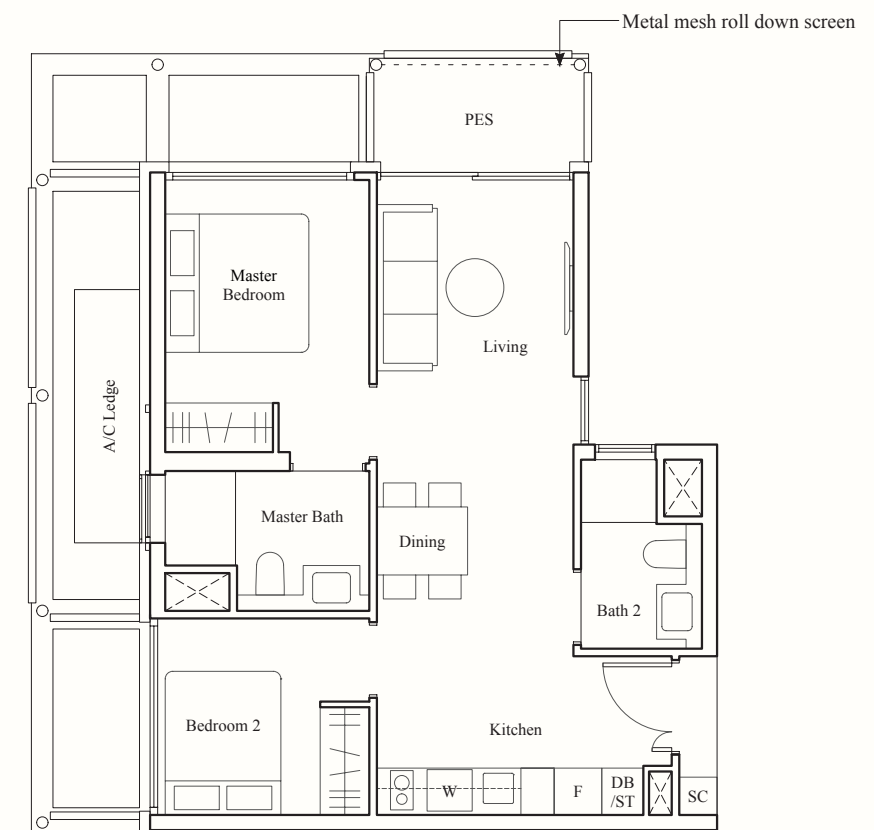
2-BEDROOM

TYPE B_{3a}-P

64 SQM / 689 SQFT

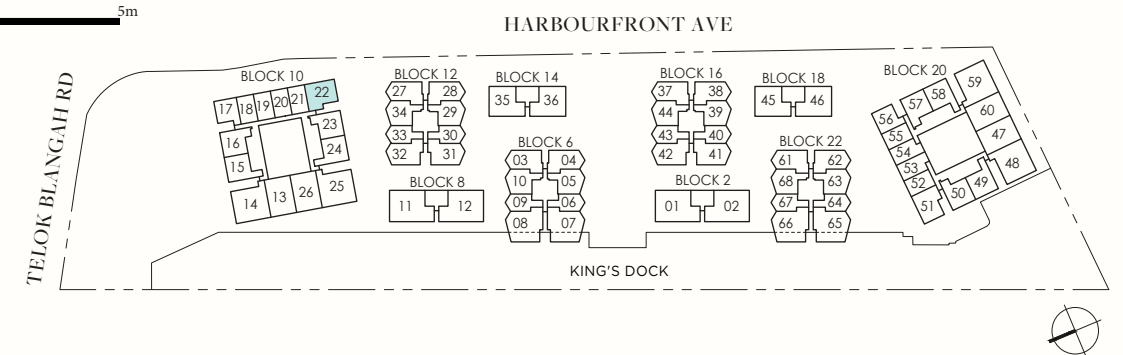
BLK 10

#01-22



F: Fridge
W: Washing Machine-cum-Dryer
DB: Distribution Board
SC: Shoe Cabinet
ST: Storage

* Denotes mirror image



AREA INCLUDES AIR-CON (A/C) LEDGE, BALCONY, PRIVATE ENCLOSED SPACE (PES) AND STRATA VOID AREA WHERE APPLICABLE. SOME UNITS ARE MIRROR IMAGES OF THE PLAN SHOWN IN THE BROCHURE. PLEASE REFER TO THE KEY PLAN FOR ORIENTATION. THE PLANS ARE SUBJECT TO CHANGE AS MAY BE REQUIRED BY THE RELEVANT AUTHORITIES. ALL MEASUREMENTS ARE APPROXIMATE ONLY AND ARE SUBJECT TO GOVERNMENT RE-SURVEY. THE BALCONY SHALL NOT BE ENCLOSED UNLESS WITH THE APPROVED BALCONY SCREEN.

2-BEDROOM

TYPE B4

71 SQM / 764 SQFT

BLK 6
#02-05 to #08-05

BLK 12
#02-29 to #08-29

BLK 16
#02-39 to #08-39

BLK 22
#02-63 to #07-63

TYPE B4-P

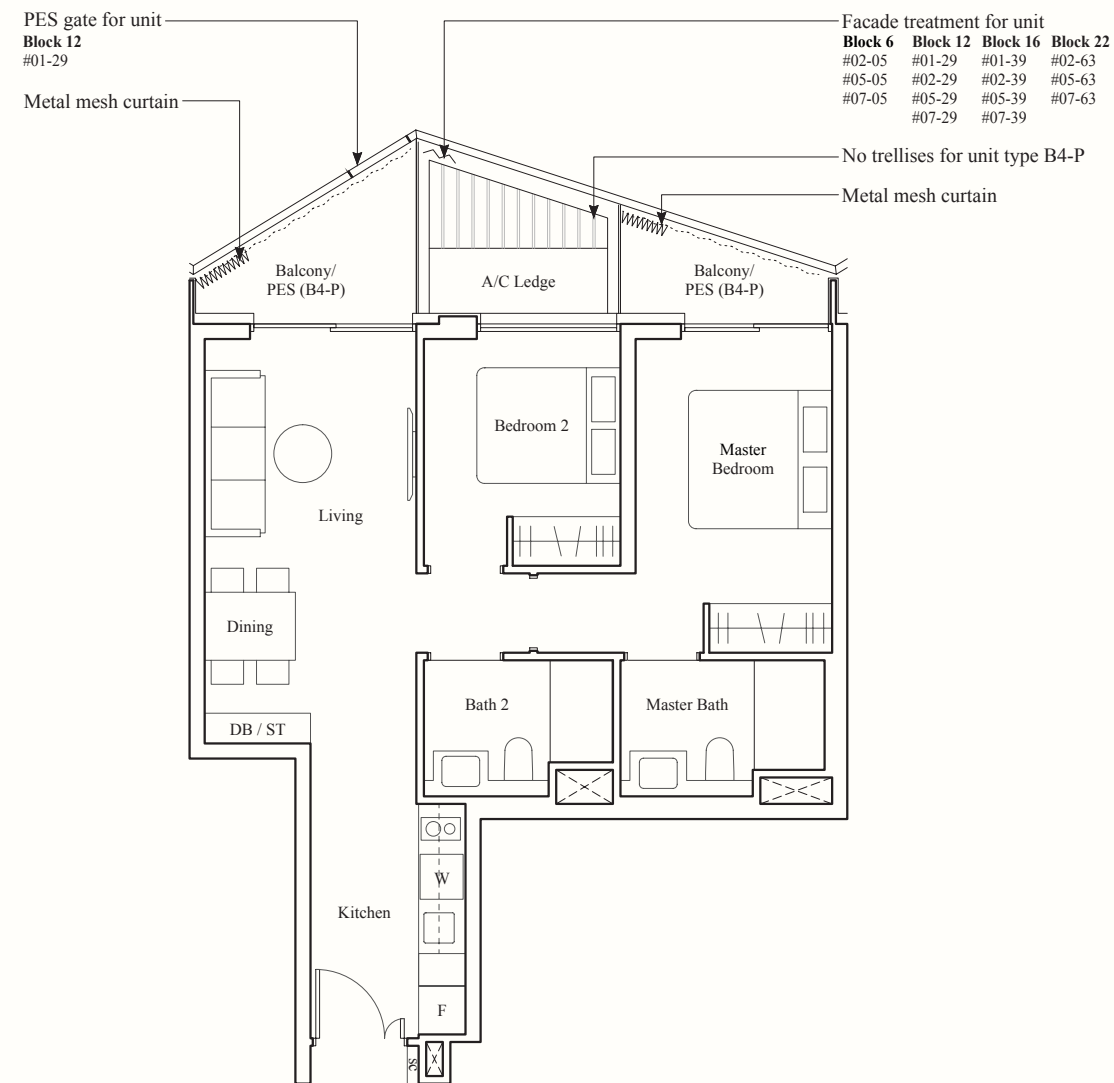
71 SQM / 764 SQFT

BLK 6
#01-05

BLK 12
#01-29

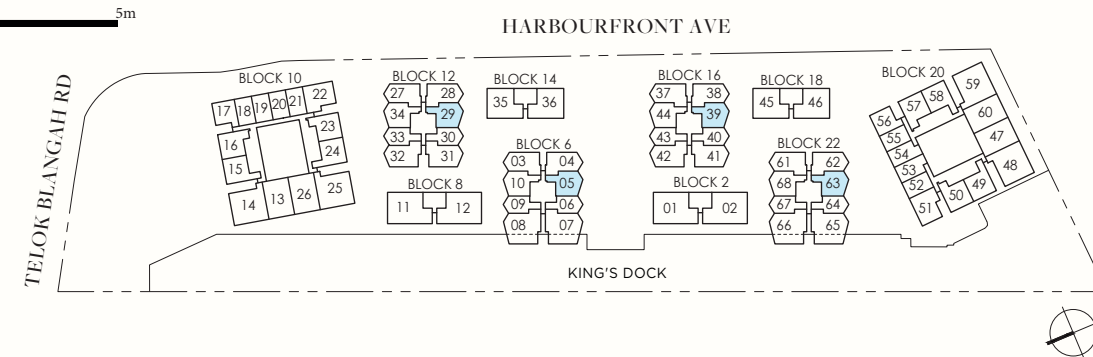
BLK 16
#01-39

BLK 22
#01-63



F: Fridge
W: Washing Machine-cum-Dryer
DB: Distribution Board
SC: Shoe Cabinet
ST: Storage

* Denotes mirror image



AREA INCLUDES AIR-CON (A/C) LEDGE, BALCONY, PRIVATE ENCLOSED SPACE (PES) AND STRATA VOID AREA WHERE APPLICABLE. SOME UNITS ARE MIRROR IMAGES OF THE PLAN SHOWN IN THE BROCHURE. PLEASE REFER TO THE KEY PLAN FOR ORIENTATION. THE PLANS ARE SUBJECT TO CHANGE AS MAY BE REQUIRED BY THE RELEVANT AUTHORITIES. ALL MEASUREMENTS ARE APPROXIMATE ONLY AND ARE SUBJECT TO GOVERNMENT RE-SURVEY. THE BALCONY SHALL NOT BE ENCLOSED UNLESS WITH THE APPROVED BALCONY SCREEN.

2-BEDROOM

TYPE B5

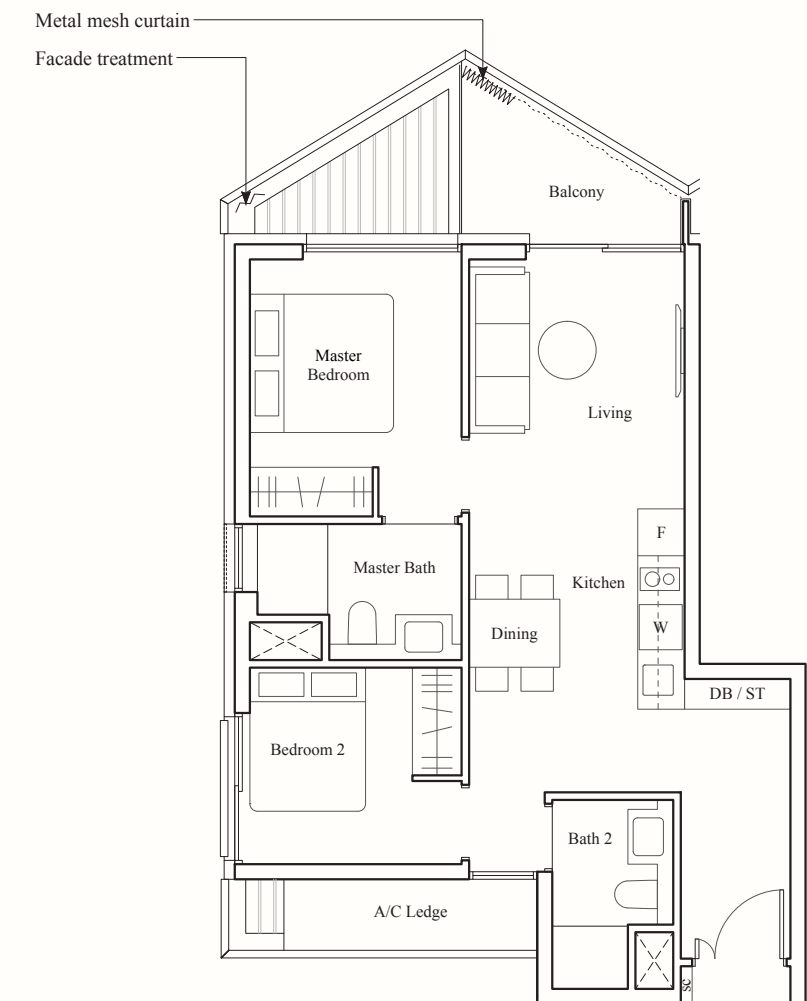
67 SQM / 721 SQFT

BLK 6
#02-03* to #08-03*
#02-04 to #08-04

BLK 12
#02-27* to #08-27*
#02-28 to #08-28

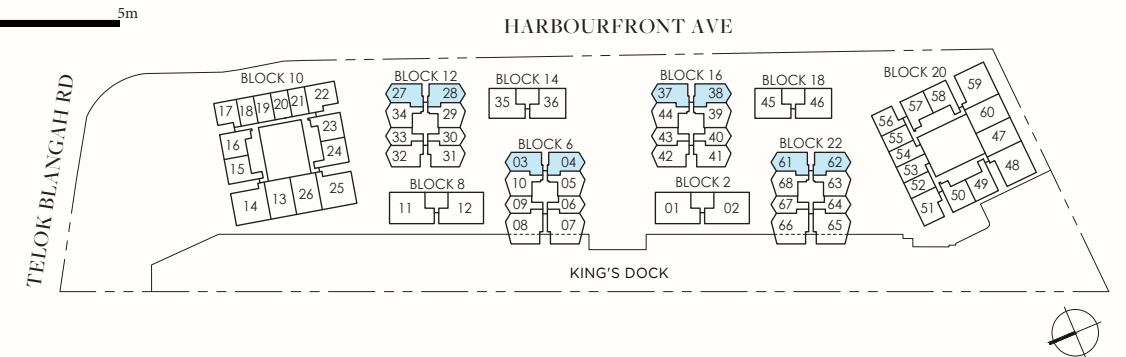
BLK 16
#02-37* to #08-37*
#02-38 to #08-38

BLK 22
#02-61* to #07-61*
#02-62 to #07-62



F: Fridge
W: Washing Machine-cum-Dryer
DB: Distribution Board
SC: Shoe Cabinet
ST: Storage

* Denotes mirror image



AREA INCLUDES AIR-CON (A/C) LEDGE, BALCONY, PRIVATE ENCLOSED SPACE (PES) AND STRATA VOID AREA WHERE APPLICABLE. SOME UNITS ARE MIRROR IMAGES OF THE PLAN SHOWN IN THE BROCHURE. PLEASE REFER TO THE KEY PLAN FOR ORIENTATION. THE PLANS ARE SUBJECT TO CHANGE AS MAY BE REQUIRED BY THE RELEVANT AUTHORITIES. ALL MEASUREMENTS ARE APPROXIMATE ONLY AND ARE SUBJECT TO GOVERNMENT RE-SURVEY. THE BALCONY SHALL NOT BE ENCLOSED UNLESS WITH THE APPROVED BALCONY SCREEN.

2-BEDROOM

TYPE B5-P

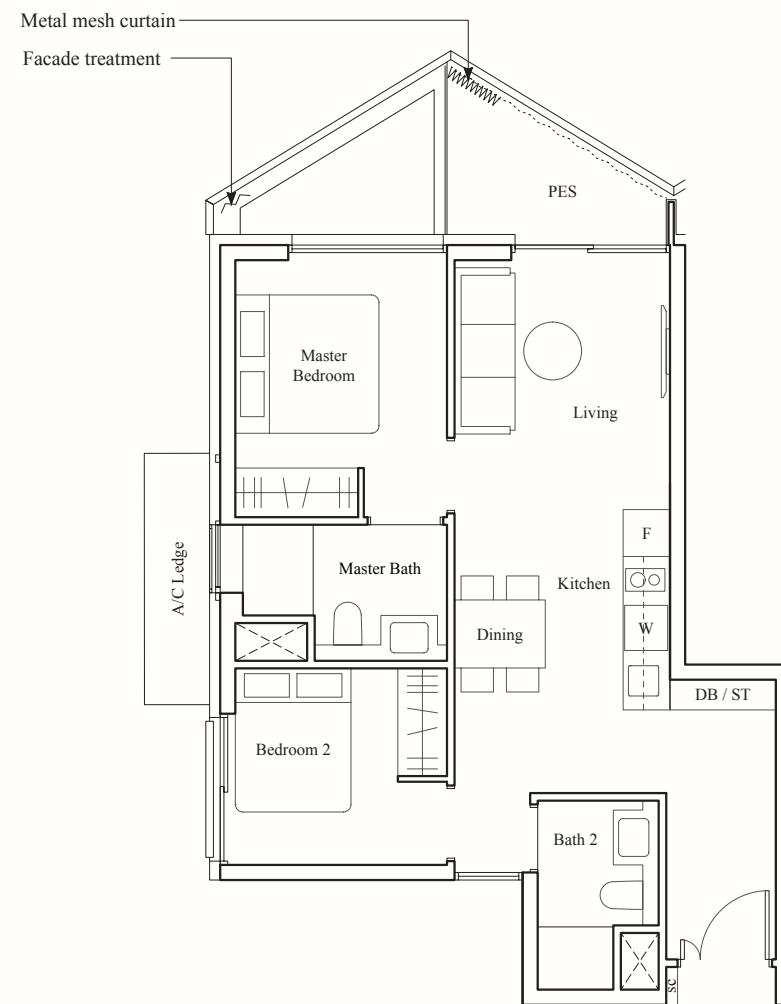
67 SQM / 721 SQFT

BLK 6

#01-03*, #01-04

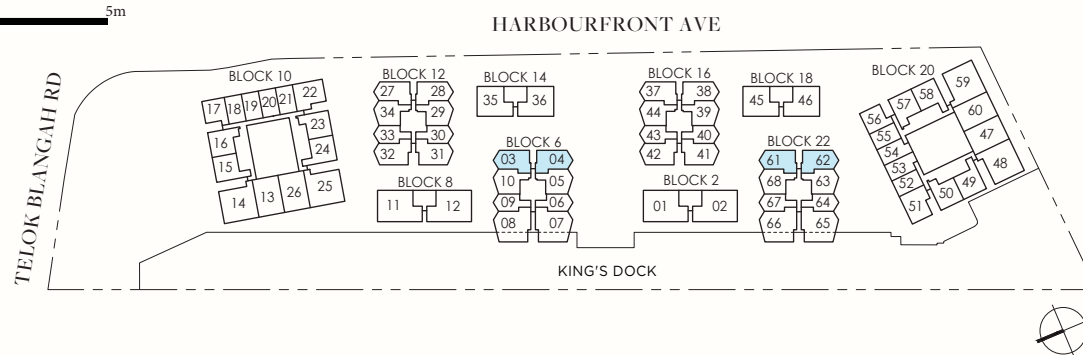
BLK 22

#01-61*, #01-62



F: Fridge
W: Washing Machine-cum-Dryer
DB: Distribution Board
SC: Shoe Cabinet
ST: Storage

* Denotes mirror image



AREA INCLUDES AIR-CON (A/C) LEDGE, BALCONY, PRIVATE ENCLOSED SPACE (PES) AND STRATA VOID AREA WHERE APPLICABLE. SOME UNITS ARE MIRROR IMAGES OF THE PLAN SHOWN IN THE BROCHURE. PLEASE REFER TO THE KEY PLAN FOR ORIENTATION. THE PLANS ARE SUBJECT TO CHANGE AS MAY BE REQUIRED BY THE RELEVANT AUTHORITIES. ALL MEASUREMENTS ARE APPROXIMATE ONLY AND ARE SUBJECT TO GOVERNMENT RE-SURVEY. THE BALCONY SHALL NOT BE ENCLOSED UNLESS WITH THE APPROVED BALCONY SCREEN.

2-BEDROOM

TYPE B6

70 SQM / 753 SQFT

BLK 6

#02-10 to #08-10

BLK 12

#02-34 to #08-34

BLK 16

#02-44 to #08-44

BLK 22

#02-68 to #07-68

TYPE B6-P

70 SQM / 753 SQFT

BLK 6

#01-10

BLK 12

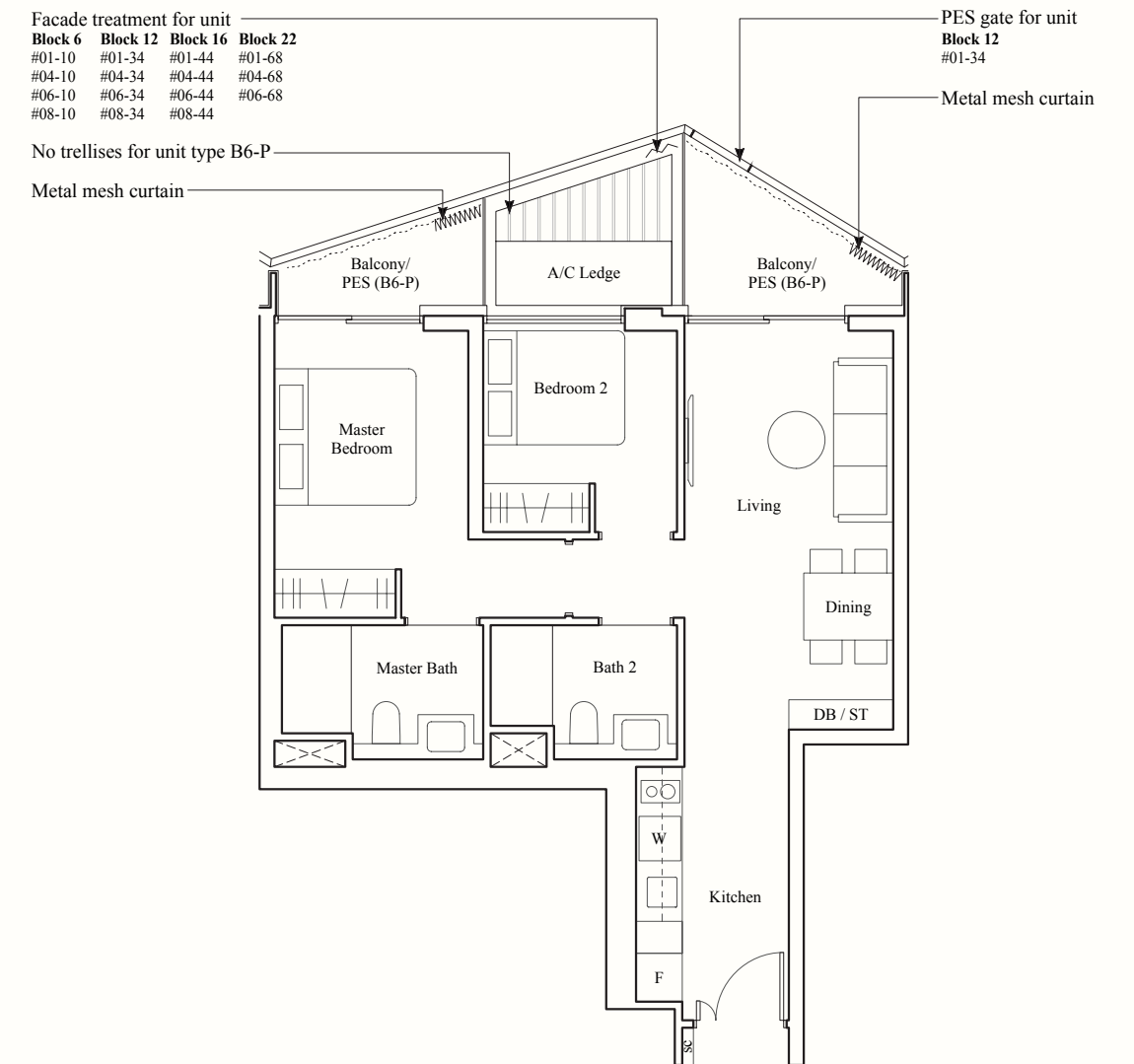
#01-34

BLK 16

#01-44

BLK 22

#01-68



Facade treatment for unit
Block 6 #01-10 #01-34 #01-44 #01-68
Block 12 #04-10 #04-34 #04-44 #04-68
Block 16 #06-10 #06-34 #06-44 #06-68
Block 22 #08-10 #08-34 #08-44

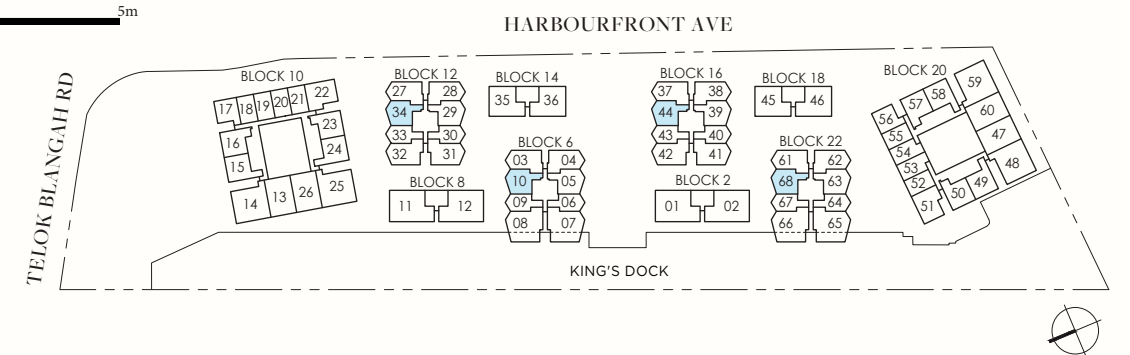
No trellises for unit type B6-P
 Metal mesh curtain

PES gate for unit
Block 12
 #01-34



F: Fridge
W: Washing Machine-cum-Dryer
DB: Distribution Board
SC: Shoe Cabinet
ST: Storage

* Denotes mirror image



AREA INCLUDES AIR-CON (A/C) LEDGE, BALCONY, PRIVATE ENCLOSED SPACE (PES) AND STRATA VOID AREA WHERE APPLICABLE. SOME UNITS ARE MIRROR IMAGES OF THE PLAN SHOWN IN THE BROCHURE. PLEASE REFER TO THE KEY PLAN FOR ORIENTATION. THE PLANS ARE SUBJECT TO CHANGE AS MAY BE REQUIRED BY THE RELEVANT AUTHORITIES. ALL MEASUREMENTS ARE APPROXIMATE ONLY AND ARE SUBJECT TO GOVERNMENT RE-SURVEY. THE BALCONY SHALL NOT BE ENCLOSED UNLESS WITH THE APPROVED BALCONY SCREEN.

2-BEDROOM + STUDY

TYPE BS1

83 SQM / 893 SQFT

BLK 6

#02-06, #02-09*

BLK 22

#02-64, #02-67*

TYPE BS1-P

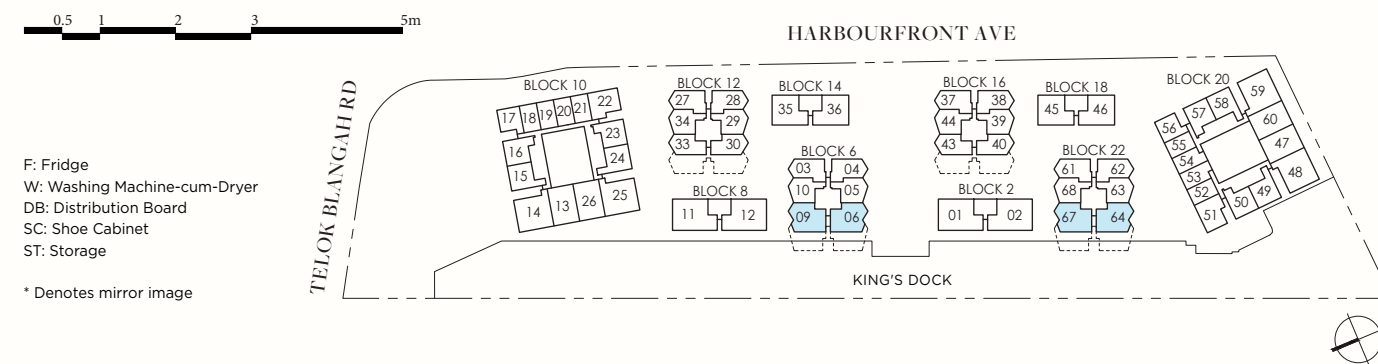
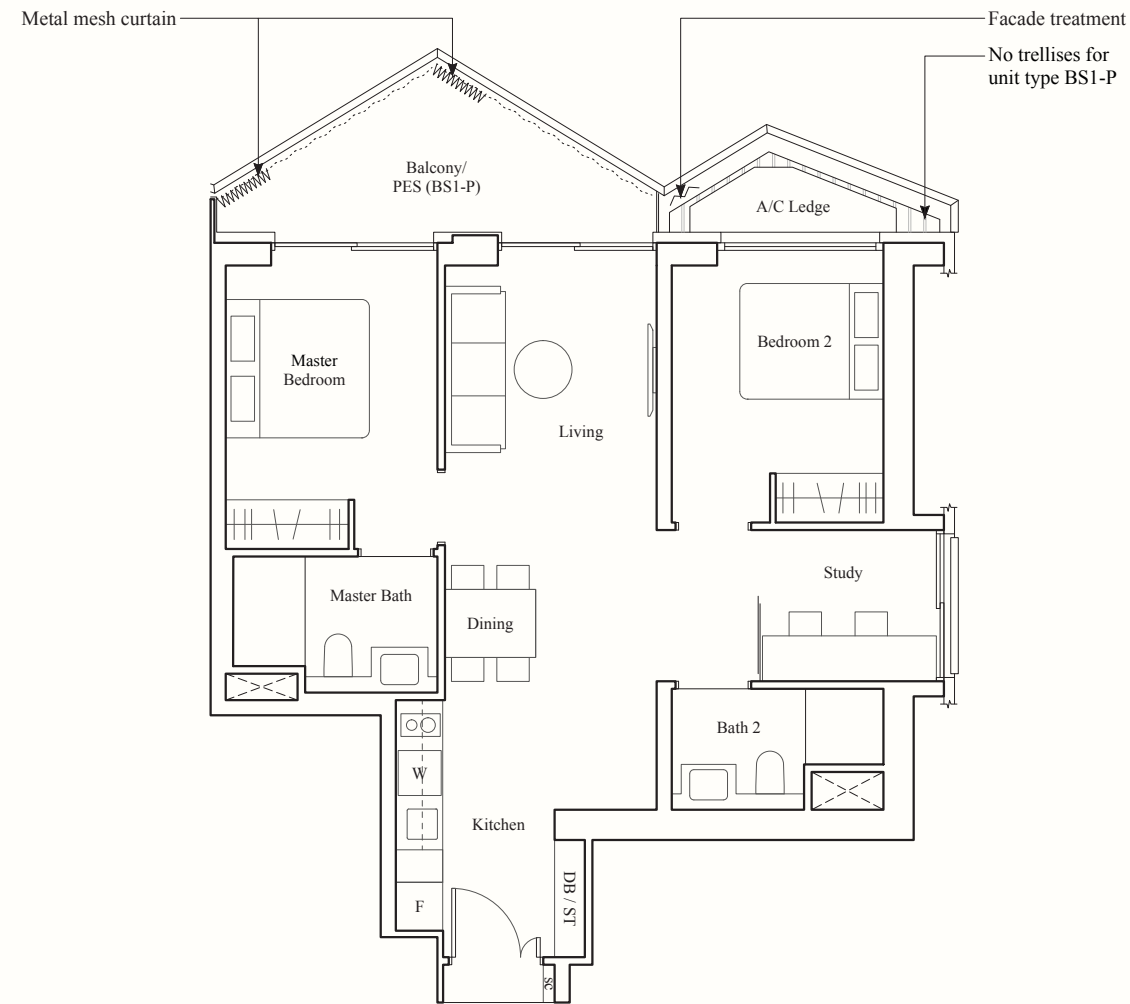
83 SQM / 893 SQFT

BLK 6

#01-06

BLK 22

#01-64



AREA INCLUDES AIR-CON (A/C) LEDGE, BALCONY, PRIVATE ENCLOSED SPACE (PES) AND STRATA VOID AREA WHERE APPLICABLE. SOME UNITS ARE MIRROR IMAGES OF THE PLAN SHOWN IN THE BROCHURE. PLEASE REFER TO THE KEY PLAN FOR ORIENTATION. THE PLANS ARE SUBJECT TO CHANGE AS MAY BE REQUIRED BY THE RELEVANT AUTHORITIES. ALL MEASUREMENTS ARE APPROXIMATE ONLY AND ARE SUBJECT TO GOVERNMENT RE-SURVEY. THE BALCONY SHALL NOT BE ENCLOSED UNLESS WITH THE APPROVED BALCONY SCREEN.

2-BEDROOM PREMIUM

TYPE BP1

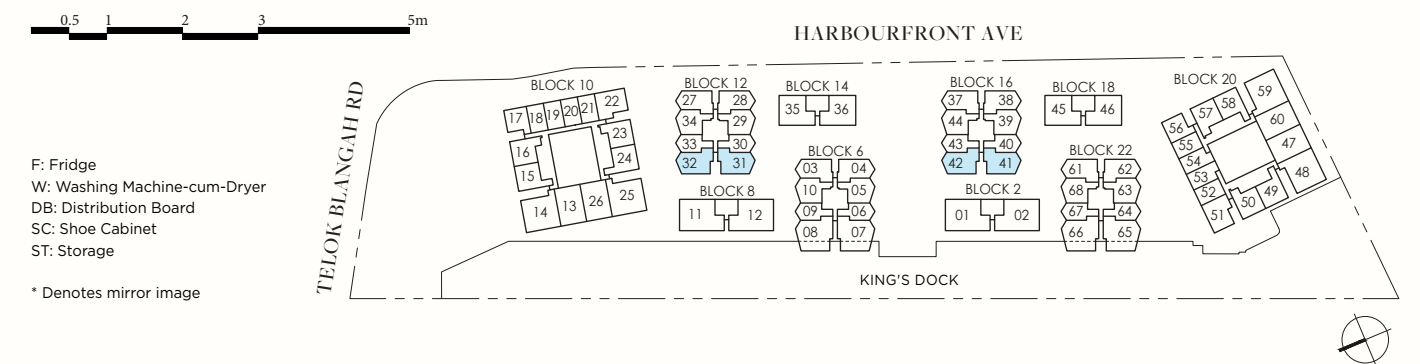
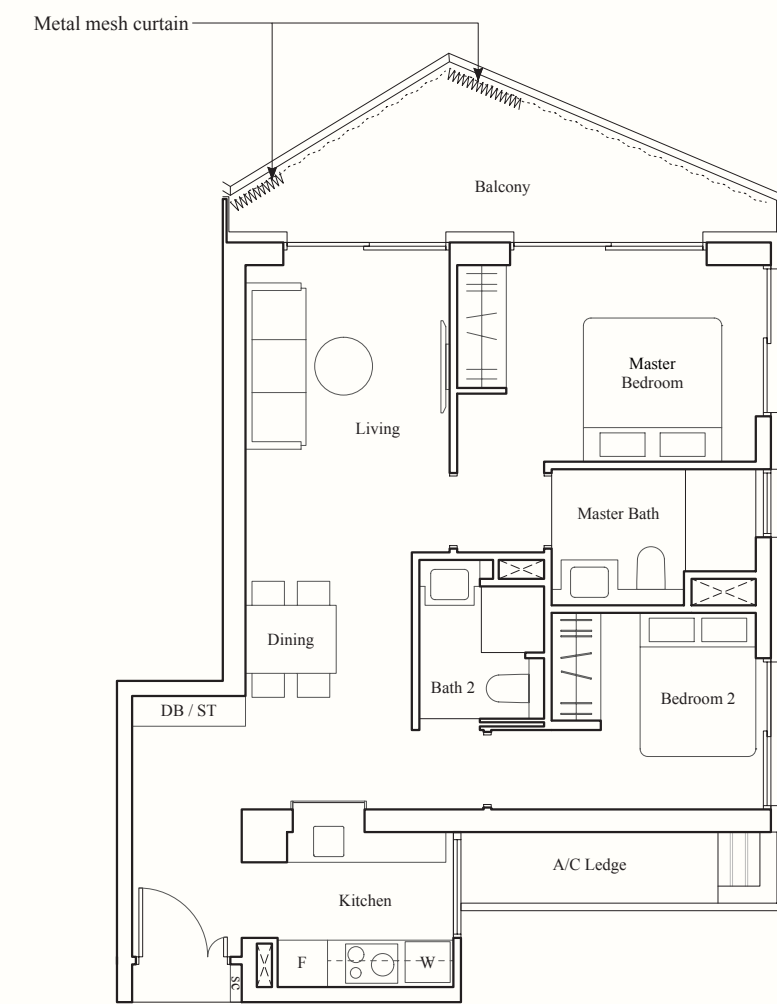
82 SQM / 883 SQFT

BLK 12

#04-31 to #08-31
#04-32* to #08-32*

BLK 16

#04-41 to #08-41
#04-42* to #08-42*



AREA INCLUDES AIR-CON (A/C) LEDGE, BALCONY, PRIVATE ENCLOSED SPACE (PES) AND STRATA VOID AREA WHERE APPLICABLE. SOME UNITS ARE MIRROR IMAGES OF THE PLAN SHOWN IN THE BROCHURE. PLEASE REFER TO THE KEY PLAN FOR ORIENTATION. THE PLANS ARE SUBJECT TO CHANGE AS MAY BE REQUIRED BY THE RELEVANT AUTHORITIES. ALL MEASUREMENTS ARE APPROXIMATE ONLY AND ARE SUBJECT TO GOVERNMENT RE-SURVEY. THE BALCONY SHALL NOT BE ENCLOSED UNLESS WITH THE APPROVED BALCONY SCREEN.

2-BEDROOM VILLA

TYPE BV1

91 SQM / 980 SQFT

BLK 14
#02-35, #02-36*

BLK 18
#02-45, #02-46*

TYPE BV1-P

91 SQM / 980 SQFT

BLK 14
#01-36*

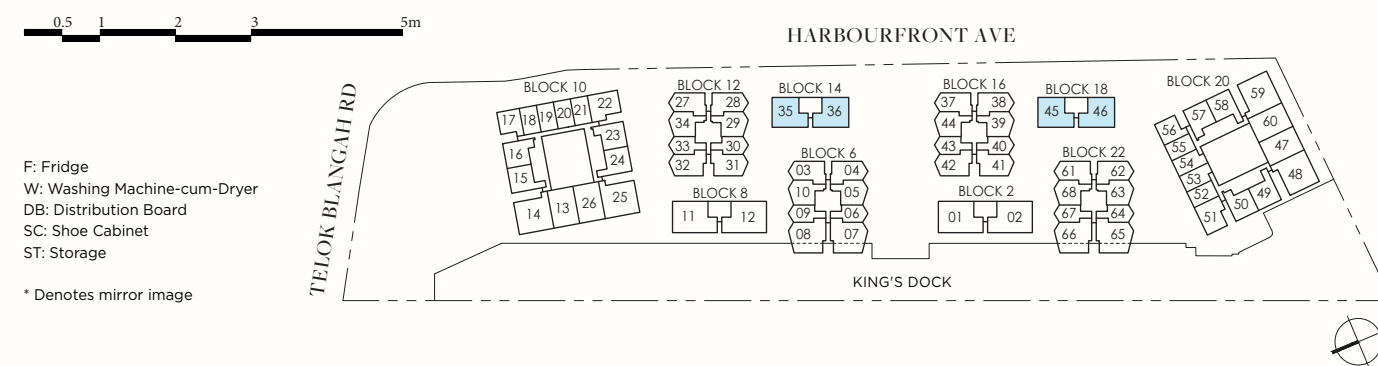
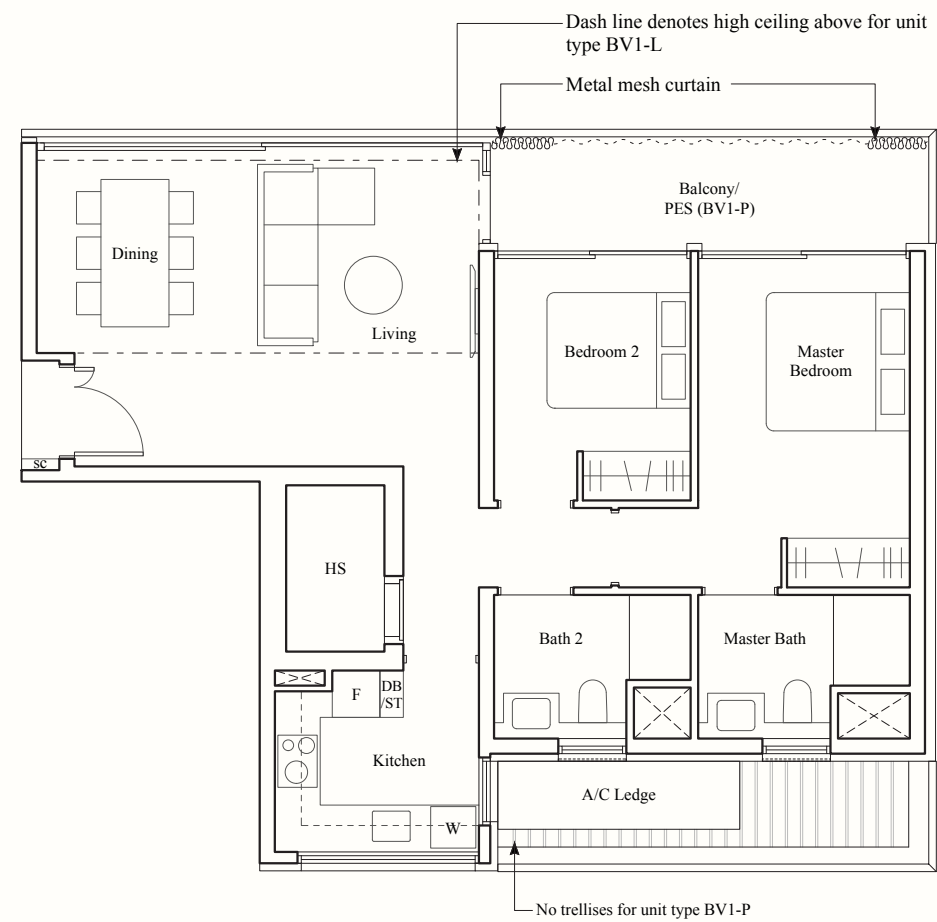
BLK 18
#01-46*

TYPE BV1-L

108 SQM / 1163 SQFT

BLK 14
#03-35, #03-36*

BLK 18
#03-45, #03-46*



AREA INCLUDES AIR-CON (A/C) LEDGE, BALCONY, PRIVATE ENCLOSED SPACE (PES) AND STRATA VOID AREA WHERE APPLICABLE. SOME UNITS ARE MIRROR IMAGES OF THE PLAN SHOWN IN THE BROCHURE. PLEASE REFER TO THE KEY PLAN FOR ORIENTATION. THE PLANS ARE SUBJECT TO CHANGE AS MAY BE REQUIRED BY THE RELEVANT AUTHORITIES. ALL MEASUREMENTS ARE APPROXIMATE ONLY AND ARE SUBJECT TO GOVERNMENT RE-SURVEY. THE BALCONY SHALL NOT BE ENCLOSED UNLESS WITH THE APPROVED BALCONY SCREEN.

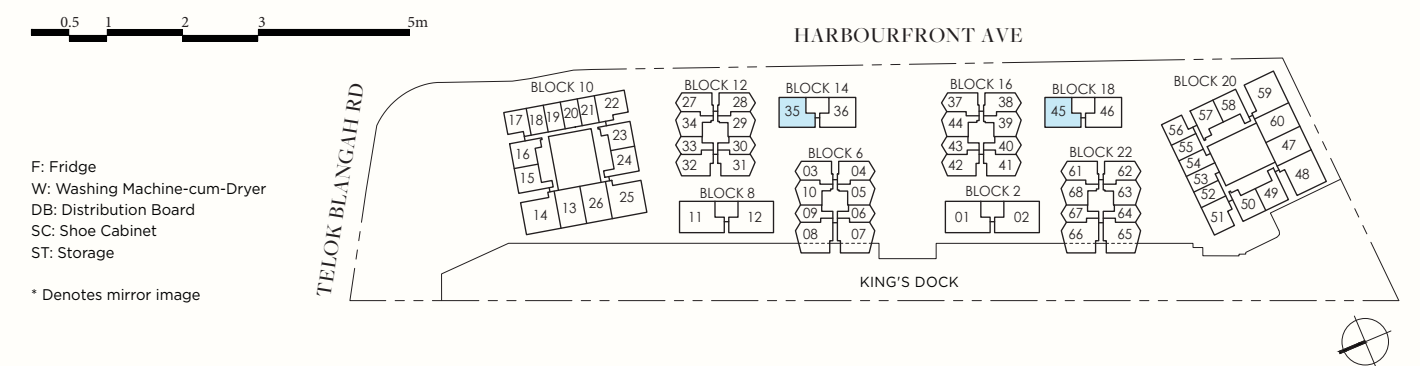
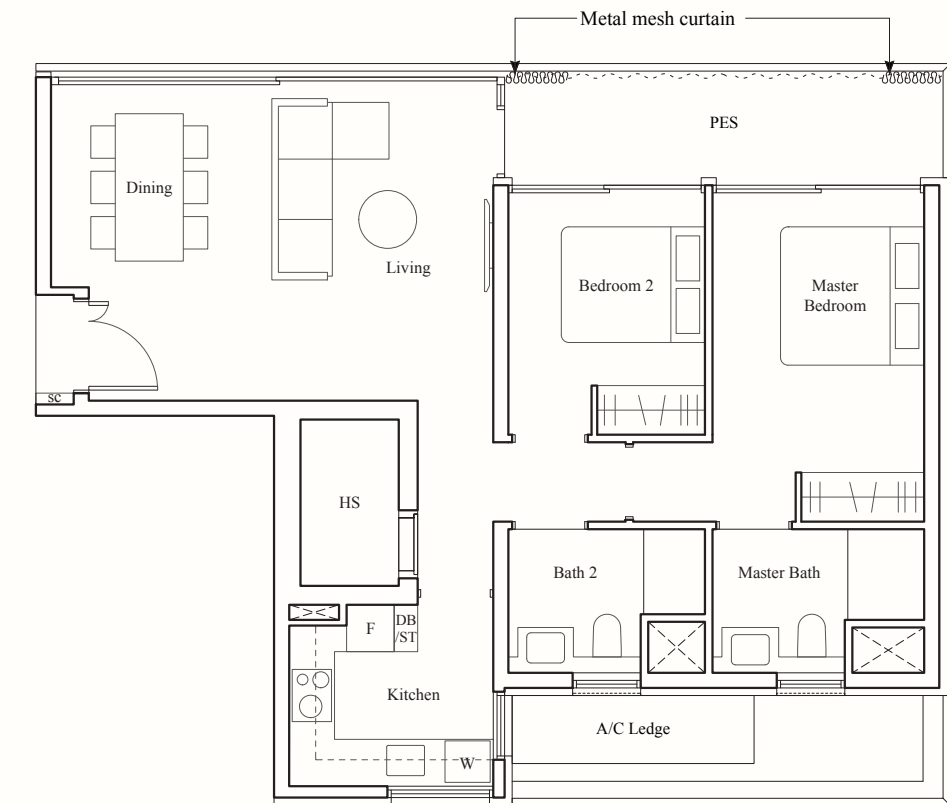
2-BEDROOM VILLA

TYPE BV1a-P

91 SQM / 980 SQFT

BLK 14
#01-35

BLK 18
#01-45



AREA INCLUDES AIR-CON (A/C) LEDGE, BALCONY, PRIVATE ENCLOSED SPACE (PES) AND STRATA VOID AREA WHERE APPLICABLE. SOME UNITS ARE MIRROR IMAGES OF THE PLAN SHOWN IN THE BROCHURE. PLEASE REFER TO THE KEY PLAN FOR ORIENTATION. THE PLANS ARE SUBJECT TO CHANGE AS MAY BE REQUIRED BY THE RELEVANT AUTHORITIES. ALL MEASUREMENTS ARE APPROXIMATE ONLY AND ARE SUBJECT TO GOVERNMENT RE-SURVEY. THE BALCONY SHALL NOT BE ENCLOSED UNLESS WITH THE APPROVED BALCONY SCREEN.